



INTERNATIONAL STUDENTS & SCHOLARS

ANNUAL REPORT

FALL 2019



2019

Table of Contents



Letter from the Director 3

Our International Community 4

International Student Data 5

History of Enrollment 6

Students on OPT 7

Countries of Citizenship 8

Enrollment by Country 9

Economic Impact 10

International Scholars 11

OISS Staff 12

Letter from the Director

Dear Colleagues,

We are pleased to share this report on the university's international student and scholar community. The Office of International Students & Scholars (OISS) tracks and provides resources for an international population of over 1,500.

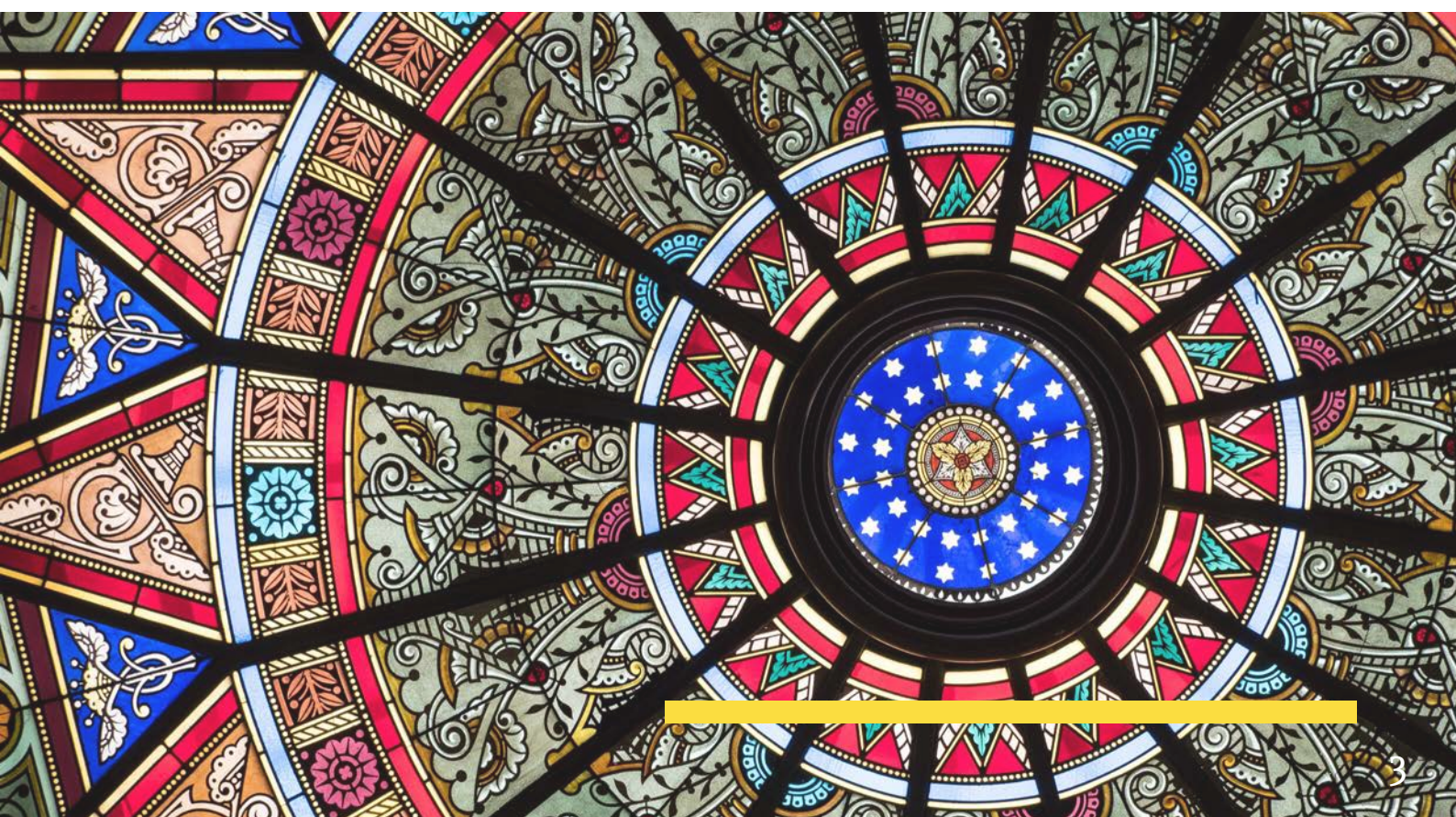
This report serves as a statistical resource about our international population. Lehigh's international community includes degree seeking and non-degree seeking non-immigrant visa holders and exchange students. It also includes the international scholars on campus who serve as researchers, faculty members and short-term lecturers at the university. Our international population also includes dependents of our students and scholars. This report does not include immigrants such as green card holders, asylees or refugees.

If you have any questions or concerns, please do not hesitate to contact me at sad416@lehigh.edu

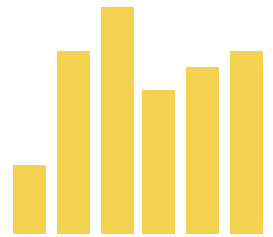
Sincerely,

Samba Dieng

Director, International Students and Scholars



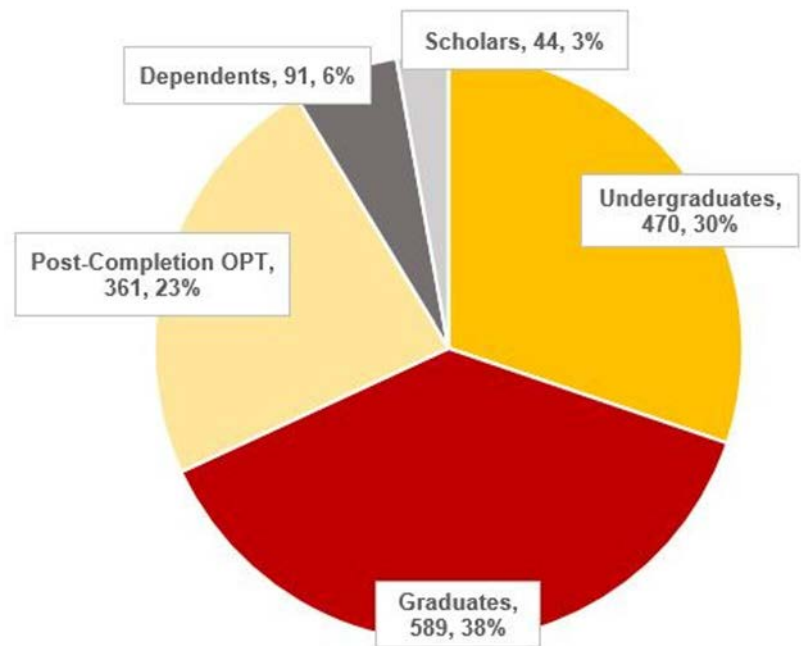
OUR INTERNATIONAL POPULATION AT LEHIGH



The Office of International Students & Scholars supports our international population by:

- Advising and supporting all international students & scholars on campus.
- Working with relevant government agencies on matters affecting our international community.
- Advocating in regards to immigration and cross-cultural/personal matters.
- Engaging and collaborating with university colleagues.
- Contributing to intercultural awareness via programming.

At Lehigh, we have a total international population of **1,555**.





International Student Stats

1,059 enrolled international students

470 undergraduates

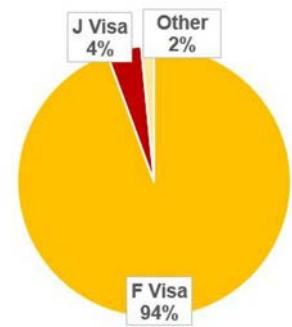
589 graduates

269 new international students

124 undergraduates

137 graduates

8 exchange



Visa Types

Undergraduate Students

33.5% - Arts & Sciences

31% - Engineering

24% - Business

10% - Intercollegiate

1.5% - General College

Top Programs of Study:

Computer Science (30 students)

Computer Science & Business (26 students)

Industrial & Systems Engineering (25 students)

Graduate Students

65.5% - Engineering

13.8% - Arts & Sciences

8.3% - Business

7.6% - Education

4.8% - Intercollegiate

Top Programs of Study:

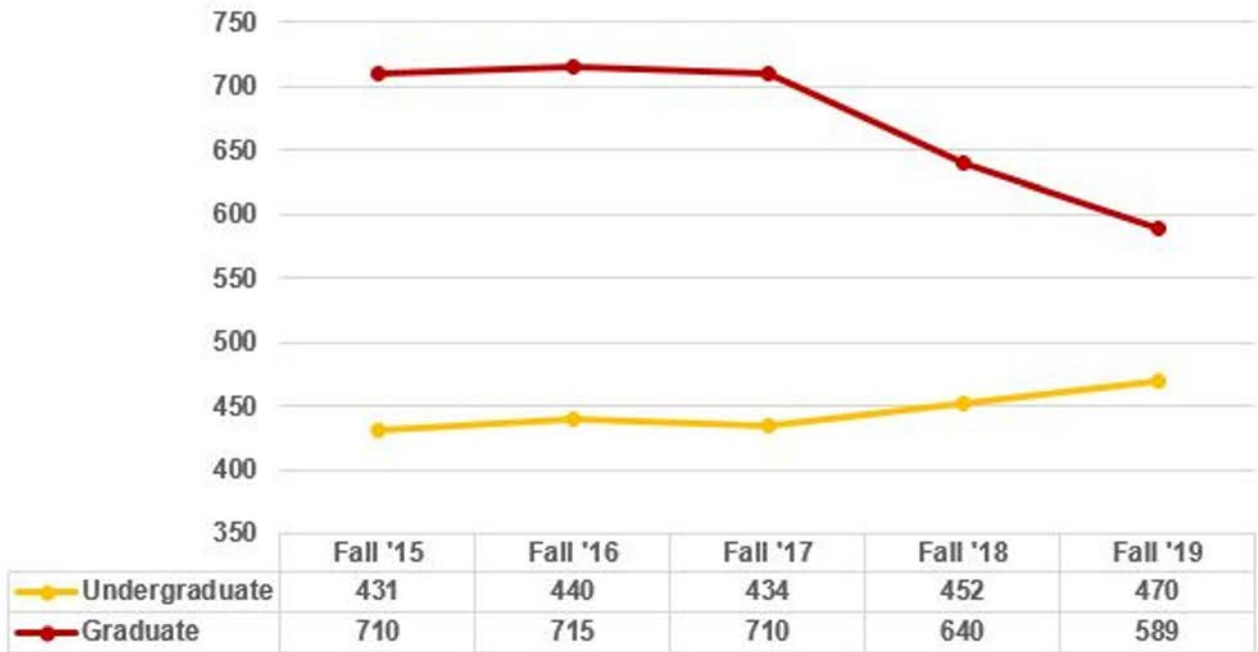
Mechanical Engineering (88 students)

Industrial & Systems Engineering (69 students)

Electrical Engineering (60 students)



5 Year Overview: International Enrollment



9%

Increase in international undergraduate enrollment in the past 5 years.

17%

Decrease in international graduate enrollment in the past 5 years.



OPTIONAL PRACTICAL TRAINING (OPT)

Optional Practical Training (OPT) is a benefit for international students allowing them to work in the U.S. for one year or more in their field of study, after completion of their degree.

STEM OPT allows Science, Technology, Engineering & Math (STEM) degree holders to apply for a 24-month extension of OPT.

18.75%

Increase in the number of students on OPT/STEM OPT from Fall '18 to Fall '19.



We currently have **361 students** on OPT or STEM OPT.

	Fall 2018	Fall 2019
OPT	119 (~39%)	192 (~53%)
STEM OPT	185 (~61%)	169 (~47%)
Total	304 students	361 students



International Student Citizenship

Asia

1. Afghanistan
2. Azerbaijan
3. Bahrain
4. Bangladesh
5. Cambodia
6. China
7. Hong Kong
8. India
9. Indonesia
10. Iran
11. Iraq
12. Israel
13. Jordan
14. Kazakhstan
15. Kuwait
16. Kyrgyzstan
17. Lebanon
18. Macau
19. Malaysia
20. Nepal
21. Oman
22. Pakistan
23. Palestine
24. Philippines
25. Saudi Arabia
26. Singapore
27. South Korea
28. Sri Lanka
29. Taiwan
30. Thailand
31. Vietnam

Africa

1. Botswana
2. Egypt
3. Ethiopia
4. Ghana
5. Kenya
6. Lesotho
7. Malawi
8. Morocco
9. Nigeria
10. Rwanda
11. Sierra Leone
12. South Africa
13. Tanzania
14. Tunisia
15. Uganda
16. Zimbabwe

Americas

1. Argentina
2. Bahamas
3. Barbados
4. Brazil
5. Canada
6. Colombia
7. Costa Rica
8. El Salvador
9. Guatemala
10. Honduras
11. Jamaica
12. Mexico
13. Nicaragua
14. Panama
15. Peru
16. Venezuela

Europe

1. Armenia
2. Bosnia
3. France
4. Georgia
5. Germany
6. Greece
7. Italy
8. Macedonia
9. Montenegro
10. Netherlands
11. Poland
12. Portugal
13. Romania
14. Russia
15. Serbia
16. Slovakia
17. Slovenia
18. Spain
19. Turkey
20. Ukraine
21. United Kingdom
22. Uzbekistan

>> 87
countries represented

Oceania

1. Australia
2. New Zealand



Enrollment by Country


Top Countries Represented:

 China (630), India (73), Iran (31)

	UG	G	T		UG	G	T
Afghanistan	0	4	4	Macedonia	1	0	1
Argentina	2	1	3	Malawi	1	0	1
Armenia	0	2	2	Malaysia	2	0	2
Australia	0	3	3	Mexico	0	1	1
Azerbaijan	1	1	2	Montenegro	1	0	1
Bahamas	1	0	1	Morocco	0	1	1
Bahrain	0	1	1	Nepal	4	2	6
Bangladesh	2	8	10	Netherlands	3	1	4
Barbados	1	0	1	New Zealand	1	0	1
Bosnia	0	2	2	Nicaragua	1	0	1
Botswana	1	0	1	Nigeria	2	3	5
Brazil	5	4	9	Oman	1	0	1
Cambodia	1	0	1	Pakistan	4	4	8
Canada	4	3	7	Palestine	1	0	1
China	292	338	630	Panama	0	1	1
Colombia	1	2	3	Peru	3	1	4
Costa Rica	1	0	1	Philippines	1	0	1
Egypt	2	6	8	Poland	0	1	1
El Salvador	0	1	1	Portugal	1	0	1
Ethiopia	3	0	3	Romania	2	0	2
France	1	0	1	Russia	1	5	6
Georgia	2	1	3	Rwanda	2	0	2
Germany	3	3	6	Saudi Arabia	3	12	15
Ghana	2	1	3	Serbia	0	1	1
Greece	4	2	6	Sierra Leone	1	0	1
Guatemala	9	2	11	Singapore	5	0	5
Honduras	1	0	1	Slovakia	0	1	1
Hong Kong	3	1	4	Slovenia	1	0	1
India	11	62	73	South Africa	0	1	1
Indonesia	0	3	3	South Korea	13	9	22
Iran	0	31	31	Spain	4	0	4
Iraq	0	7	7	Sri Lanka	0	2	2
Israel	1	0	1	Taiwan	3	7	10
Italy	3	1	4	Tanzania	1	0	1
Jamaica	0	2	2	Thailand	9	2	11
Jordan	4	1	5	Tunisia	0	1	1
Kazakhstan	2	3	5	Turkey	2	17	19
Kenya	2	3	5	Uganda	2	0	2
Kuwait	0	7	7	Ukraine	1	1	2
Kyrgyzstan	1	0	1	United Kingdom	3	3	6
Lebanon	2	0	2	Uzbekistan	0	1	1
Lesotho	0	1	1	Venezuela	1	1	2
Macau	1	0	1	Vietnam	17	1	18
				Zimbabwe	5	0	5

INTERNATIONAL STUDENT IMPACT ON THE LEHIGH VALLEY



International students
contribute to the local
and state economy,
supporting thousands
of U.S. jobs annually
(NAFSA).

Lehigh University ranks **#7**
in the state of Pennsylvania for
economic growth produced by
international students.

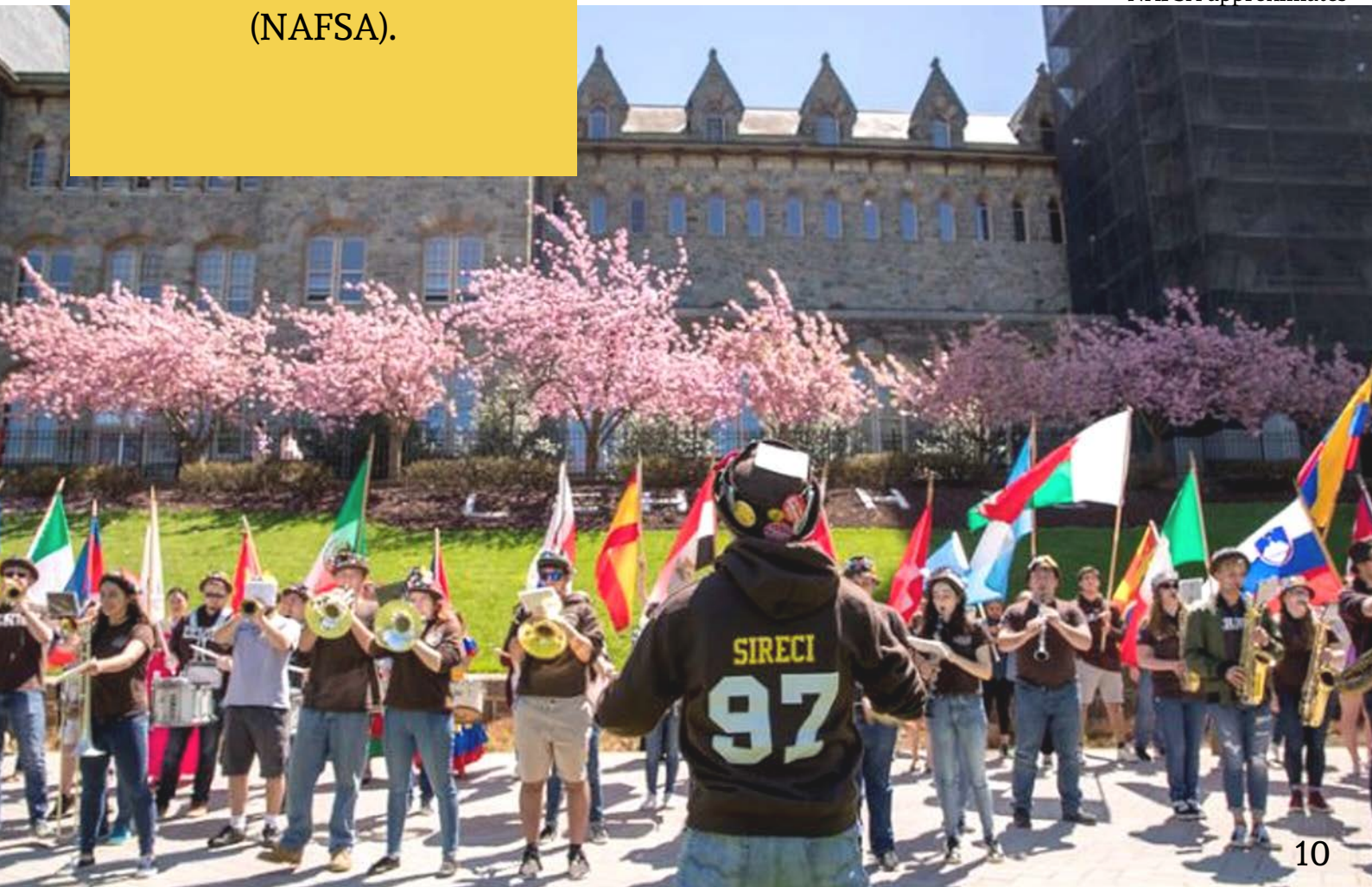
*Our students have *contributed:*

1,007 *jobs*

64.2 *million dollars*

to the Pennsylvania economy.

*NAFSA approximates



International Scholar Stats



Our 44 scholars include:
*visiting researchers & scientists,
professors and student interns.*

Fields of specialization:

- Bioengineering
- Biological sciences
- Chemical and biomolecular engineering
- Chemistry
- Civil engineering
- Electrical engineering
- Foreign languages & literature
- Industrial engineering
- Journalism
- Management (business)
- Materials science
- Mathematics
- Mechanical engineering
- Music
- Structural engineering

Our scholars come from:

Africa
Ghana (1)

Asia
China (24)
India (2)
Japan (1)
South Korea (4)
Timor-Leste (1)

Europe
France (1)
Germany (2)
Italy (1)
Lithuania (1)
Poland (2)
Russia (1)
Spain (1)

Middle East
Iran (1)

South America
Colombia (1)

**Scholars as of 9/17/19; scholars arrive throughout the year*



Our Staff



Samba Dieng
Director



Jeanne Ma
Associate Director



Olga Scarpero
Assistant Director



Sophie Goodfellow
Advisor



Caroline Neal
Intercultural Programs Coordinator



Winnie Gu
Graduate Assistant



Alex Gonzalez
Graduate Assistsant

